

quick STEP 2





quick STEP 2 COLLECTION

de Um den Quickstep immer wieder neu zu entdecken und weiterzuentwickeln, muss ein guter Tänzer ihn sicher beherrschen. Er gilt als der fröhlichste und lebendigste unter den Turniertänzen und zeichnet sich durch schnelle, kontrollierte und fließende Bewegungen aus. Dieser Tanz ist eine eigenwillige Mischung aus dynamischen Schritten, einem schnellen Tempo und fortlaufenden Wechseln.

In der Quickstep Collection von Halbmond spiegelt sich diese Dynamik wider. Mit 36 zeitlosen Designs in je 6 Farbvarianten, einem schnellen Musterservice und kurzen Lieferzeiten, bietet Ihnen diese Kollektion ein Höchstmaß an Flexibilität.

- 900 g/m² Markenpolyamid für höchsten Anspruch
- Produziert mit modernster Chromojet-Technologie
- 36 Designs aller Art
- 6 Farboptionen pro Design
- Unkomplizierte Auswahl
- Einfach zu bestellen
- Schneller Musterservice
- Kurze Lieferzeiten
- Wettbewerbsfähige Preise

en In order to continually rediscover and refine the quickstep, a good dancer must have a firm command of it. It is regarded as the most cheerful and animated ballroom dance and is characterised by swift, controlled and fluid movements. The dance is a distinctive mix of dynamic steps, a fast tempo and successive changes.

This dynamism is reflected in Halbmond's Quickstep Collection. With 36 classic designs in each of the six colour combinations, a fast sample service and speedy delivery times, this collection offers you the maximum degree of flexibility.

- 900 g/m² branded polyamide for the highest demands
- Manufactured by the latest Chromojet technology
- 36 designs of any kind
- 6 colour combinations per design
- Straightforward choice
- Easy to order
- Fast sample service
- Quick delivery times
- Competitive prices

fr Pour redécouvrir et faire évoluer sans cesse le Quickstep, un bon danseur doit bien sûr le maîtriser. Parmi les danses de compétition, cette danse est considérée comme la plus joyeuse et la plus vivante, et se caractérise par des mouvements rapides, contrôlés et fluides. Cette danse mélange de façon originale pas dynamiques, tempo rapide et changement continu.

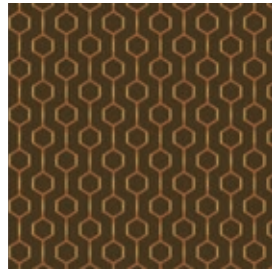
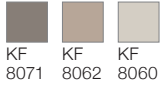
Cette dynamique se reflète dans la collection Quickstep d'Halbmond. Avec 36 modèles intemporels, chacun décliné dans six couleurs différentes, un service d'échantillons rapide et des délais de livraison courts, cette collection vous offre une grande flexibilité.

- 900 g/m² en polyamide de marque pour répondre aux exigences les plus élevées
- Fabriqué grâce à la technologie de pointe Chromojet
- 36 modèles dans tous les genres
- 6 couleurs au choix par modèle
- Sélection aisée
- Facile à commander
- Service d'échantillons rapide
- Courts délais de livraison
- Prix compétitifs

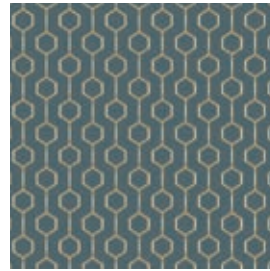
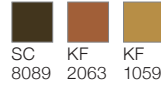




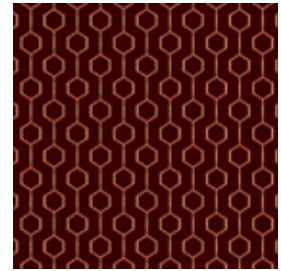
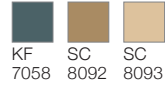
Q50-1



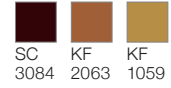
Q50-2



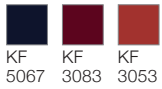
Q50-4



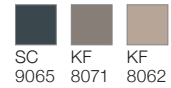
Q50-5



Q50-6



Q50-3

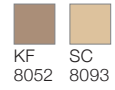


Repeat appr. 16,7 x 16 cm
Detail appr. 100 x 100 cm

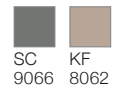




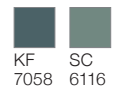
Q51-1



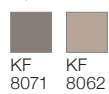
Q51-3



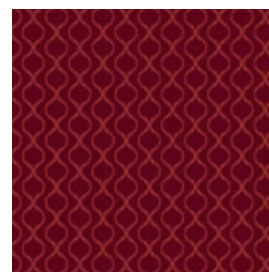
Q51-4



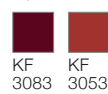
Q51-2



Repeat appr. 16,7 x 11 cm
Detail appr. 100 x 100 cm



Q51-5

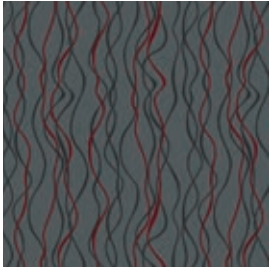
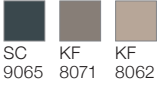


Q51-6

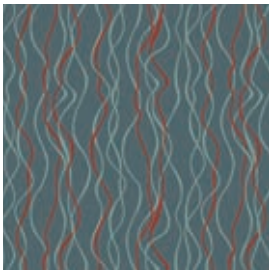




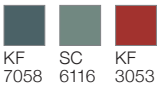
Q52-1



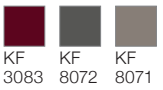
Q52-3



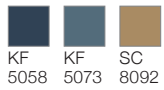
Q52-4



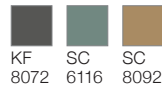
Q52-5



Q52-6



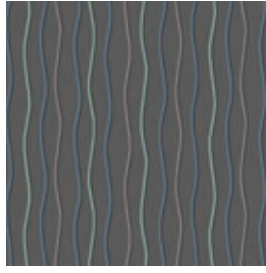
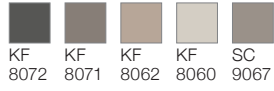
Q52-2



Repeat appr. 66,7 x 65,7 cm
Detail appr. 100 x 100 cm



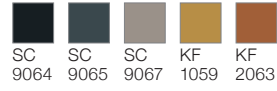
Q53-1



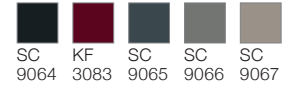
Q53-2



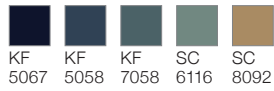
Q53-3



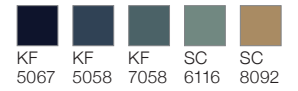
Q53-5



Q53-6



Q53-4

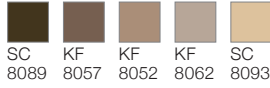


Repeat appr. 66,7 x 32,8 cm
Detail appr. 100 x 100 cm

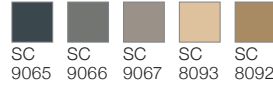




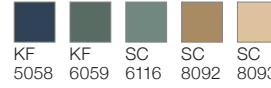
Q54-2



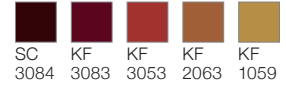
Q54-3



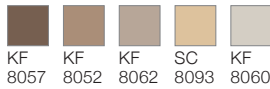
Q54-4



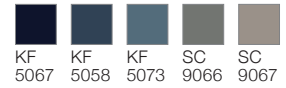
Q54-5



Q54-1

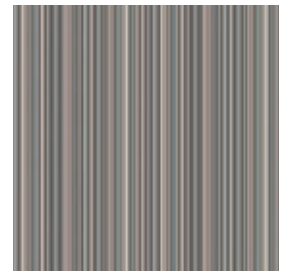


Q54-6

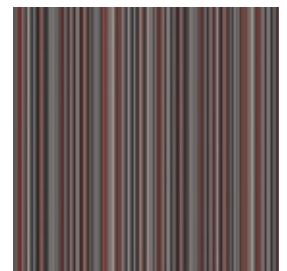
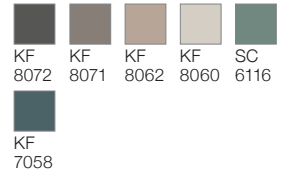


Repeat appr. 66,7 x 65,7 cm
Detail appr. 100 x 100 cm

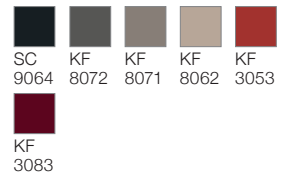




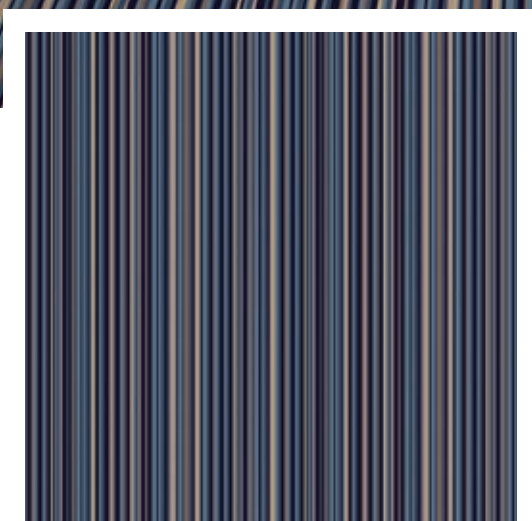
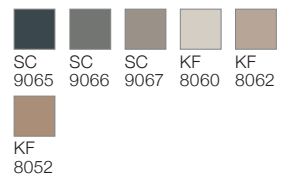
Q55-1



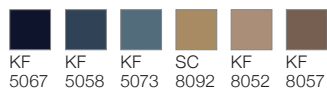
Q55-2



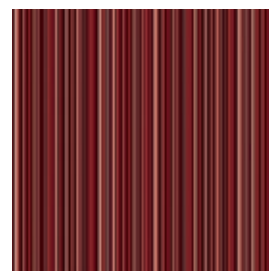
Q55-3



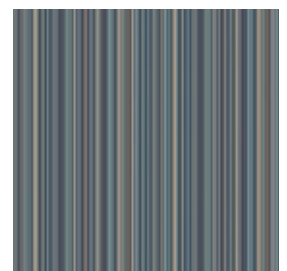
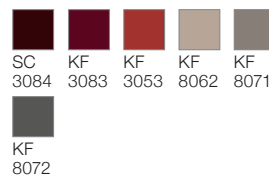
Q55-6



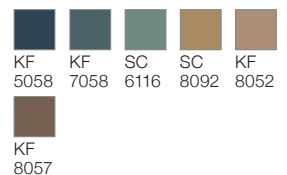
Repeat appr. 50 x 50 cm
Detail appr. 100 x 100 cm



Q55-5

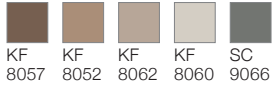


Q55-4

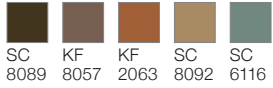




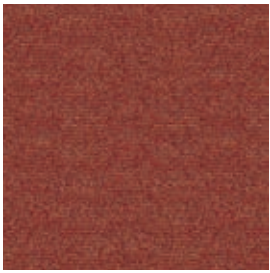
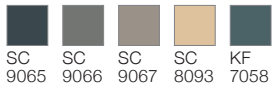
Q56-1



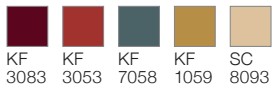
Q56-2



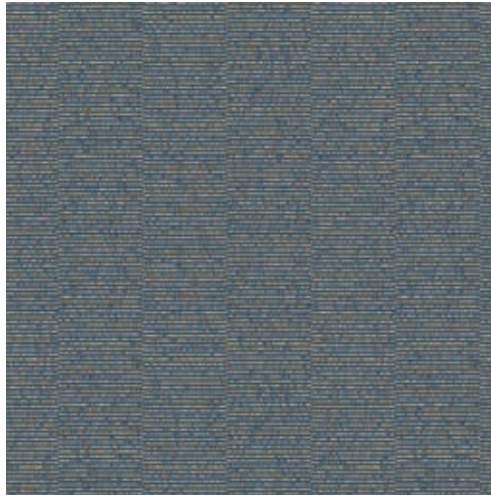
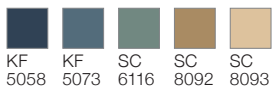
Q56-3



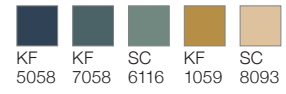
Q56-5



Q56-6



Q56-4

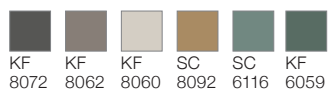


Repeat appr. 66,7 x 65,7 cm
Detail appr. 100 x 100 cm

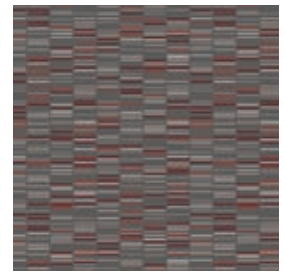




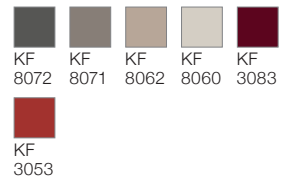
Q57-1



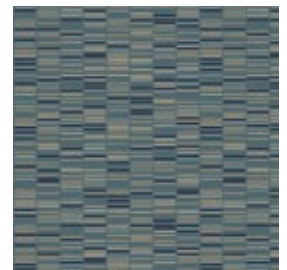
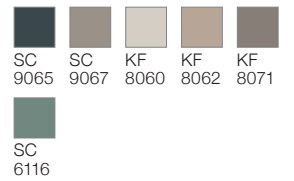
Repeat appr. 66,7 x 72,4 cm
Detail appr. 100 x 100 cm



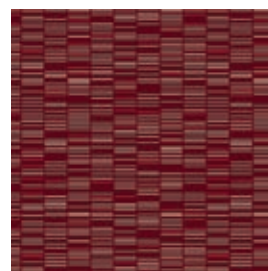
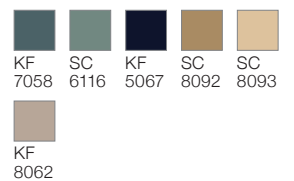
Q57-2



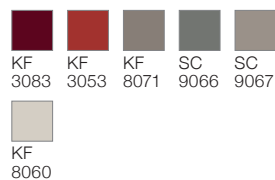
Q57-3



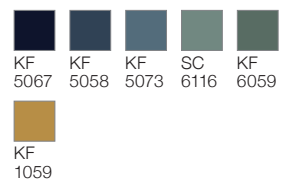
Q57-4

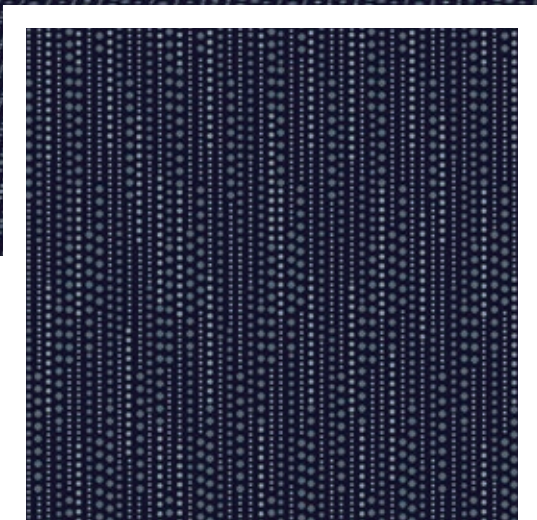


Q57-5

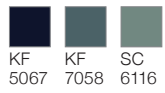


Q57-6





Q58-6

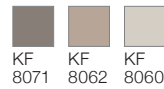


KF 5067 KF 7058 SC 6116

Repeat appr. 100 x 98,5 cm
Detail appr. 100 x 100 cm



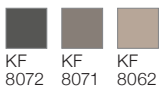
Q58-1



KF 8071 KF 8062 KF 8060



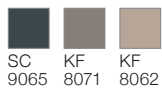
Q58-2



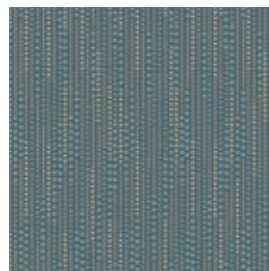
KF 8072 KF 8071 KF 8062



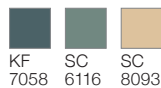
Q58-3



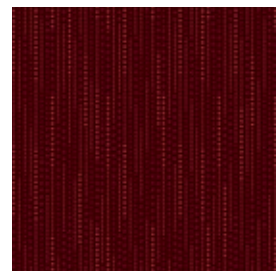
SC 9065 KF 8071 KF 8062



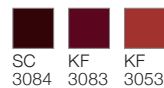
Q58-4



KF 7058 SC 6116 SC 8093

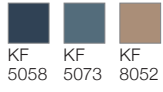


Q58-5

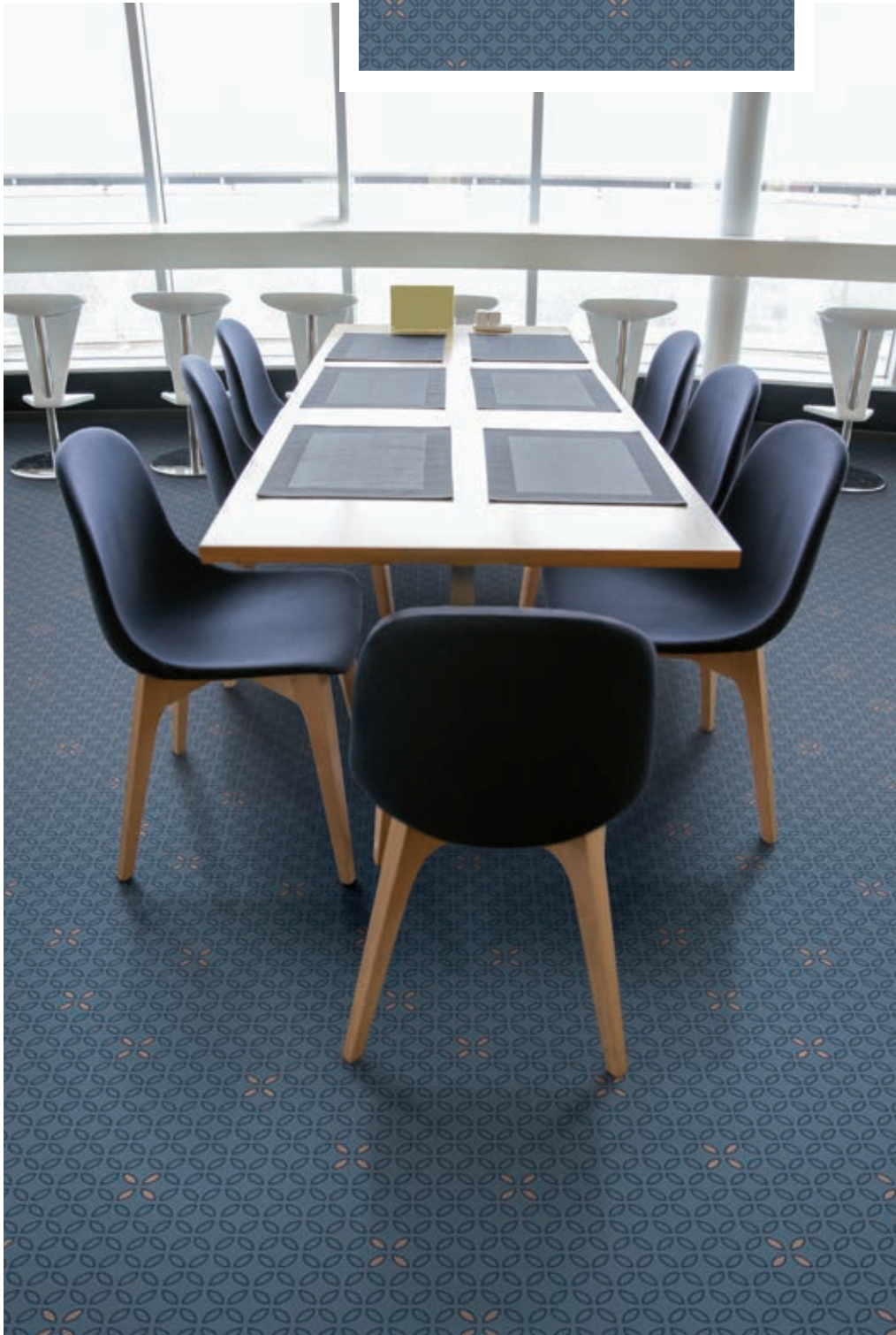
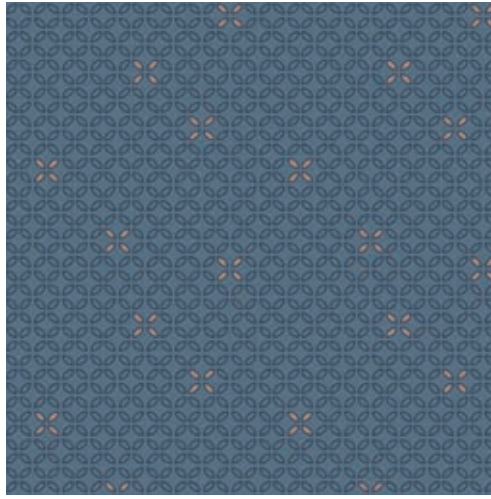


SC 3084 KF 3083 KF 3053

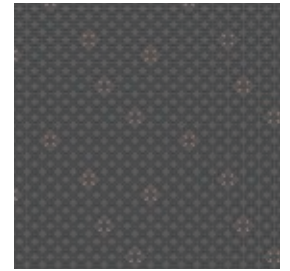
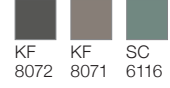
Q59-6



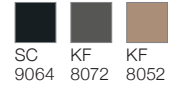
Repeat appr. 50 x 49,2 cm
Detail appr. 100 x 100 cm



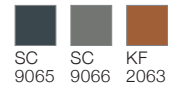
Q59-1



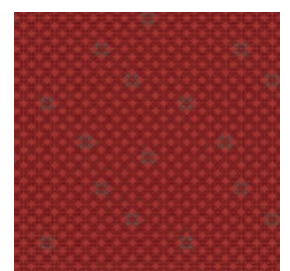
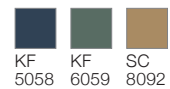
Q59-2



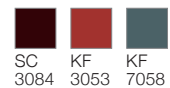
Q59-3



Q59-4

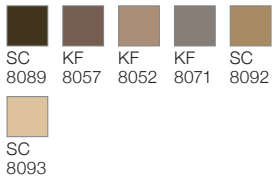


Q59-5





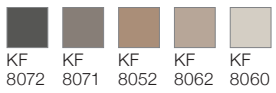
Q60-2



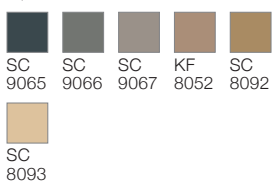
Repeat appr. 66,7 x 64,8 cm
Detail appr. 100 x 100 cm



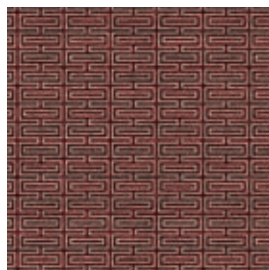
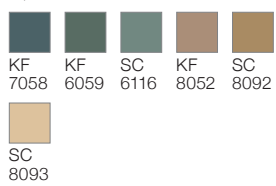
Q60-1



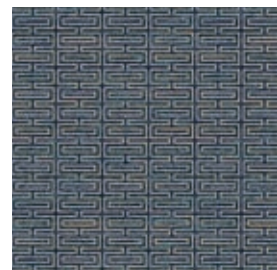
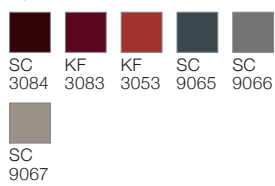
Q60-3



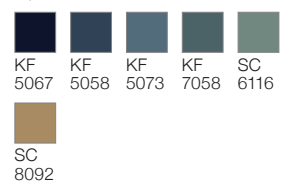
Q60-4



Q60-5

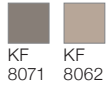


Q60-6

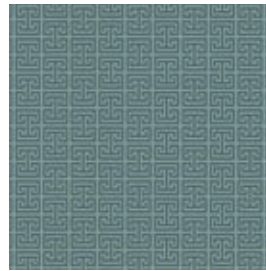




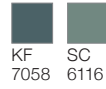
Q61-1



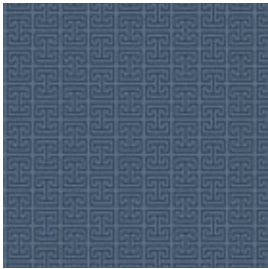
Q61-2



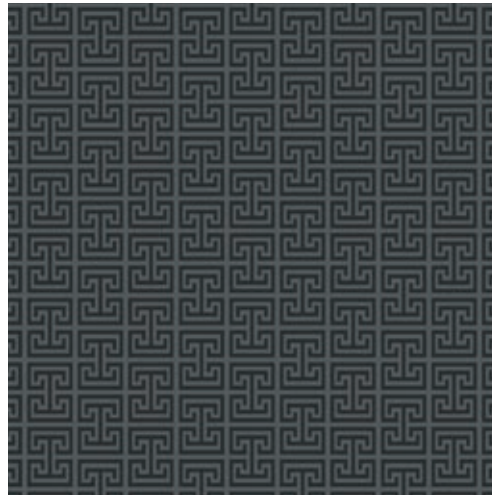
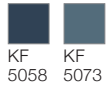
Q61-4



Q61-5



Q61-6



Q61-3



Repeat appr. 20 x 12,6 cm
Detail appr. 100 x 100 cm

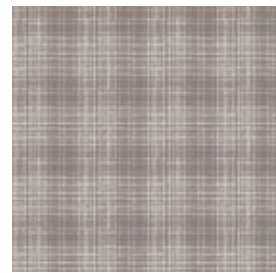




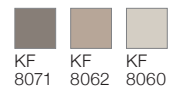
Q62-2



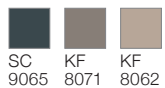
Repeat appr. 50 x 49,2 cm
Detail appr. 100 x 100 cm



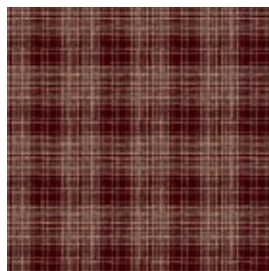
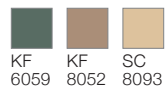
Q62-1



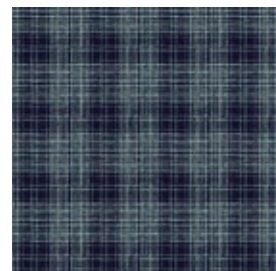
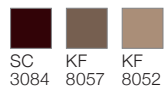
Q62-3



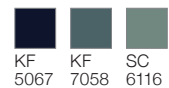
Q62-4

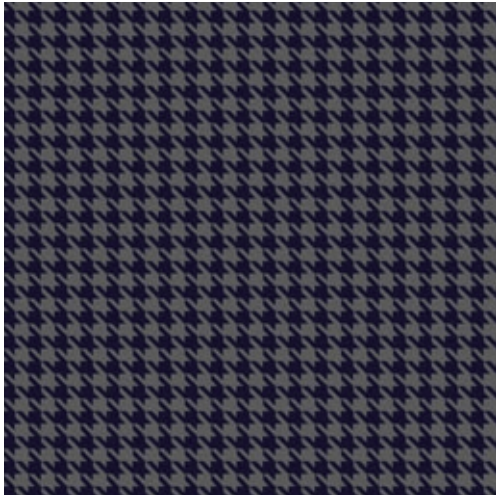


Q62-5



Q62-6



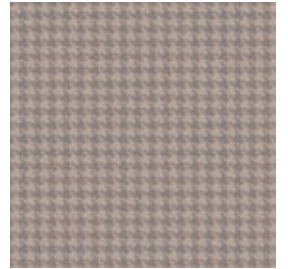


Q63-6



KF 5067 KF 8072

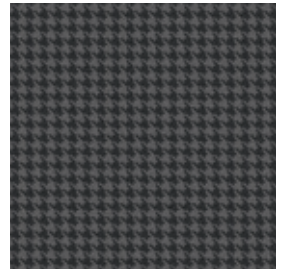
Repeat appr. 5,0 x 4,9 cm
Detail appr. 100 x 100 cm



Q63-1



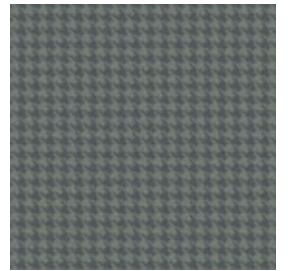
KF 8071 KF 8062



Q63-2



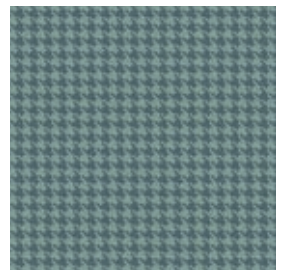
SC 9064 KF 8072



Q63-3



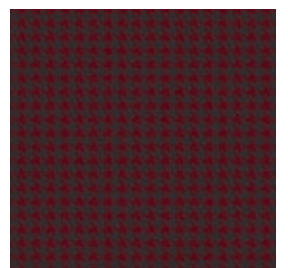
SC 9065 SC 9066



Q63-4



KF 7058 SC 6116



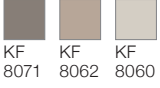
Q63-5



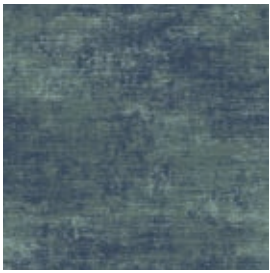
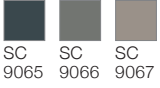
SC 9064 KF 3083



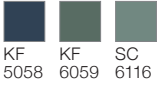
Q64-1



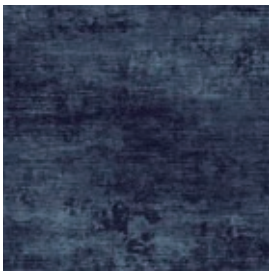
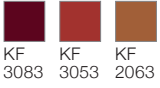
Q64-3



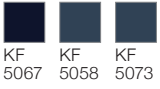
Q64-4



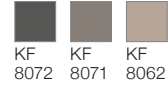
Q64-5



Q64-6



Q64-2

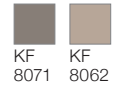


Repeat appr. 133,3 x 131,3 cm
Detail appr. 100 x 100 cm





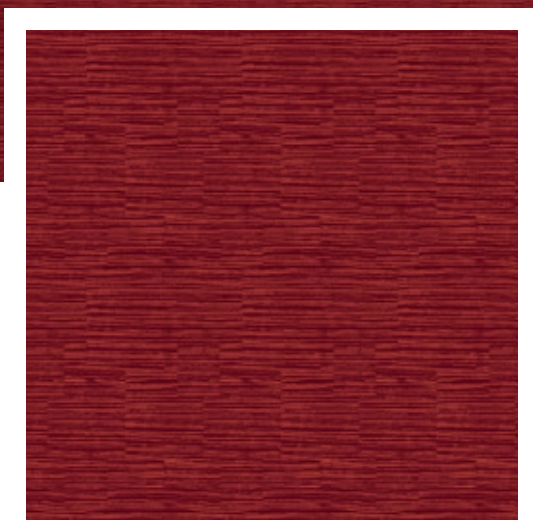
Q65-1



Q65-2



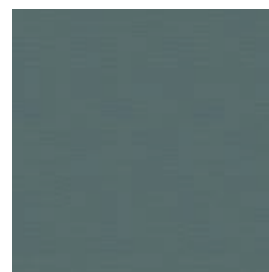
Q65-3



Q65-5



Repeat appr. 30,8 x 47,4 cm
Detail appr. 100 x 100 cm



Q65-4

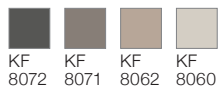


Q65-6





Q66-1



Q66-2



Repeat appr. 50 x 49,2 cm

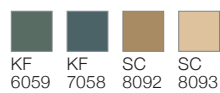
Detail appr. 100 x 100 cm



Q66-3



Q66-4



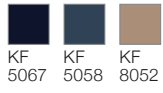
Q66-5



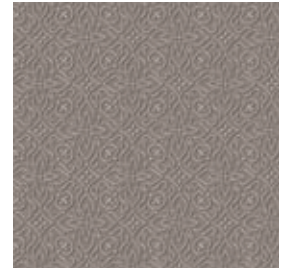
Q66-6



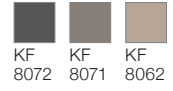
Q67-6



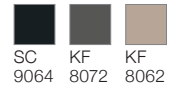
Repeat appr. 33,3 x 32,8 cm
Detail appr. 100 x 100 cm



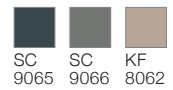
Q67-1



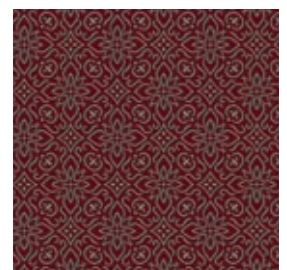
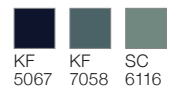
Q67-2



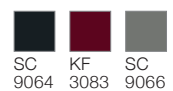
Q67-3



Q67-4

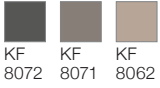


Q67-5

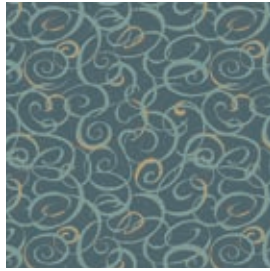




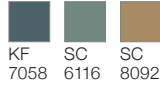
Q68-2



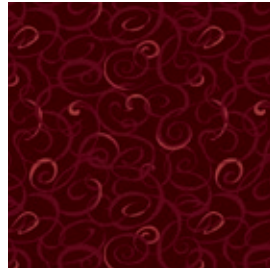
KF 8072 KF 8071 KF 8062



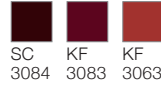
Q68-4



KF 7058 SC 6116 SC 8092



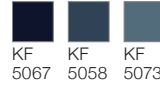
Q68-5



SC 3084 KF 3083 KF 3063



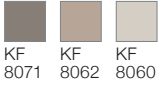
Q68-6



KF 5067 KF 5058 KF 5073



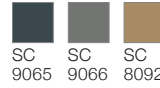
Q68-1



KF 8071 KF 8062 KF 8060



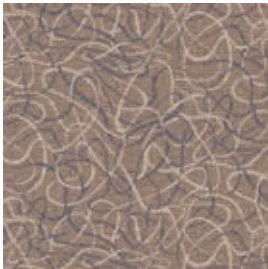
Q68-3



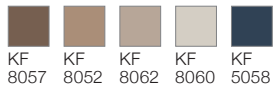
SC 9065 SC 9066 SC 8092

Repeat appr. 66,7 x 65,7 cm
Detail appr. 100 x 100 cm



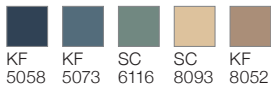


Q69-1



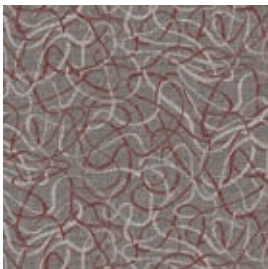
KF 8057 KF 8052 KF 8062 KF 8060 KF 5058

Q69-6

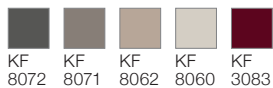


KF 5058 KF 5073 SC 6116 SC 8093 KF 8052

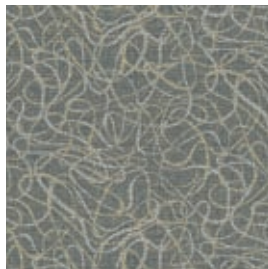
Repeat appr. 133,3 x 73 cm
Detail appr. 100 x 100 cm



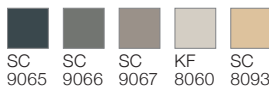
Q69-2



KF 8072 KF 8071 KF 8062 KF 8060 KF 3083



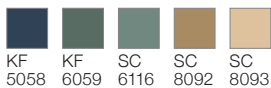
Q69-3



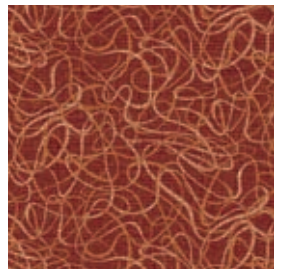
SC 9065 SC 9066 SC 9067 KF 8060 SC 8093



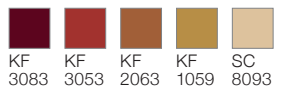
Q69-4



KF 5058 KF 6059 SC 6116 SC 8092 SC 8093



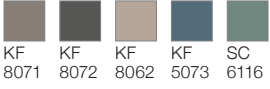
Q69-5



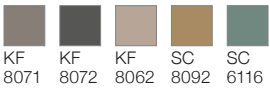
KF 3083 KF 3053 KF 2063 KF 1059 SC 8093



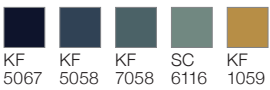
Q70-1



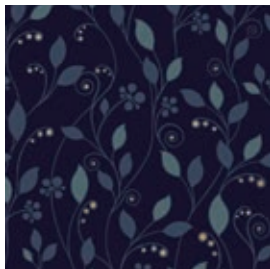
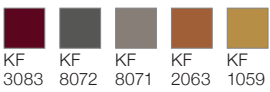
Q70-2



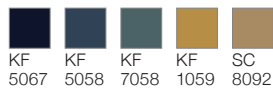
Q70-4



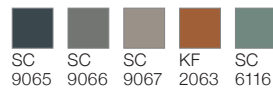
Q70-5



Q70-6

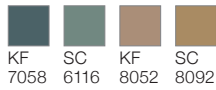


Q70-3

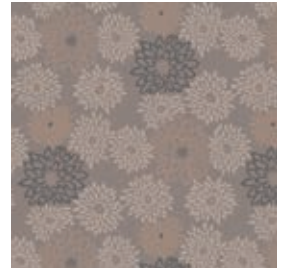


Repeat appr. 100 x 100 cm
Detail appr. 100 x 100 cm

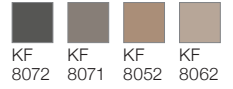
Q71-4



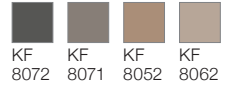
Repeat appr. 80 x 78,7 cm
Detail appr. 100 x 100 cm



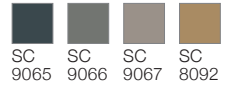
Q71-1



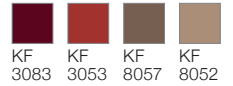
Q71-2



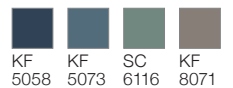
Q71-3



Q71-5

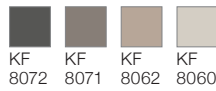


Q71-6





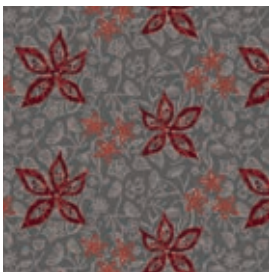
Q72-1



KF 8072 KF 8071 KF 8062 KF 8060

Repeat appr. 80 x 42,8 cm

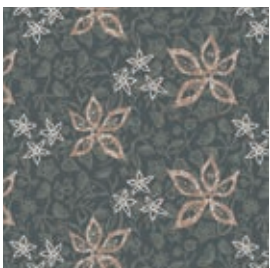
Detail appr. 100 x 100 cm



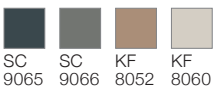
Q72-2



KF 8072 KF 8071 KF 3083 KF 3053



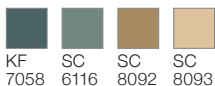
Q72-3



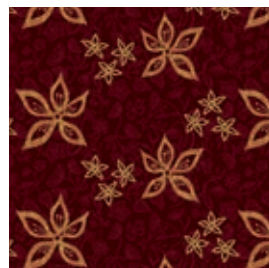
SC 9065 SC 9066 KF 8052 KF 8060



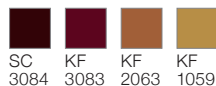
Q72-4



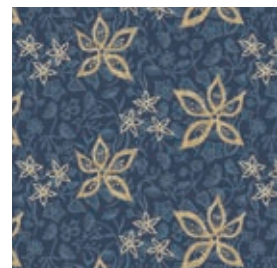
KF 7058 SC 6116 SC 8092 SC 8093



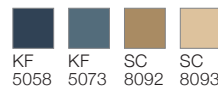
Q72-5



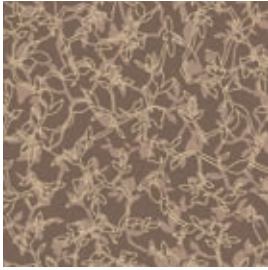
SC 3084 KF 3083 KF 2063 KF 1059



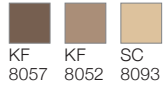
Q72-6



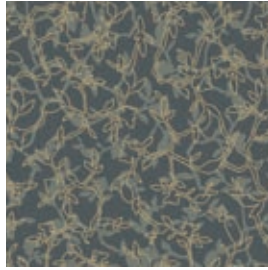
KF 5058 KF 5073 SC 8092 SC 8093



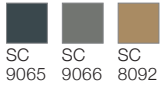
Q73-1



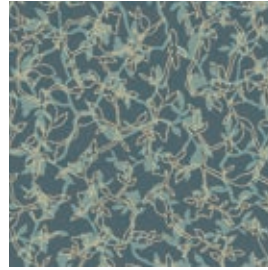
KF 8057 KF 8052 SC 8093



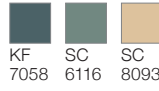
Q73-3



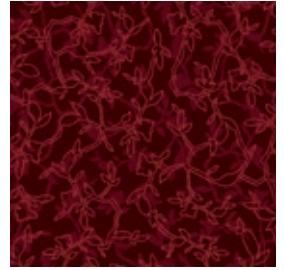
SC 9065 SC 9066 SC 8092



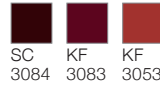
Q73-4



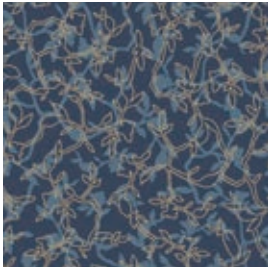
KF 7058 SC 6116 SC 8093



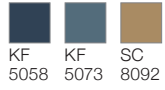
Q73-5



SC 3084 KF 3083 KF 3053



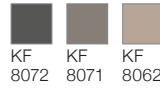
Q73-6



KF 5058 KF 5073 SC 8092



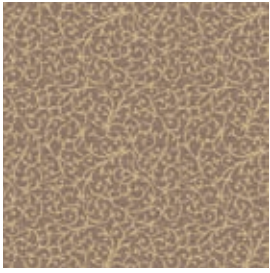
Q73-2



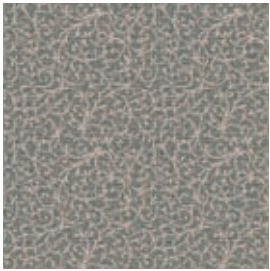
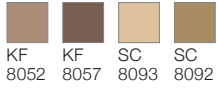
KF 8072 KF 8071 KF 8062

Repeat appr. 100 x 119 cm
Detail appr. 100 x 100 cm

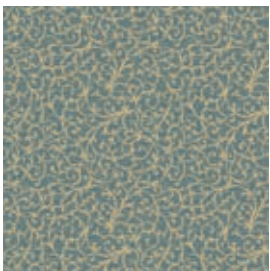




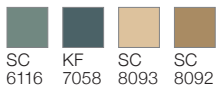
Q74-1



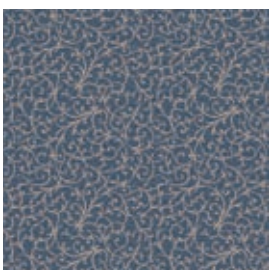
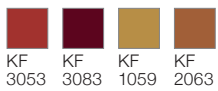
Q74-3



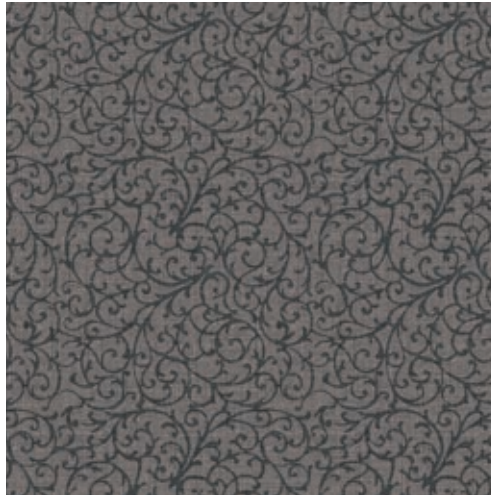
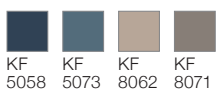
Q74-4



Q74-5



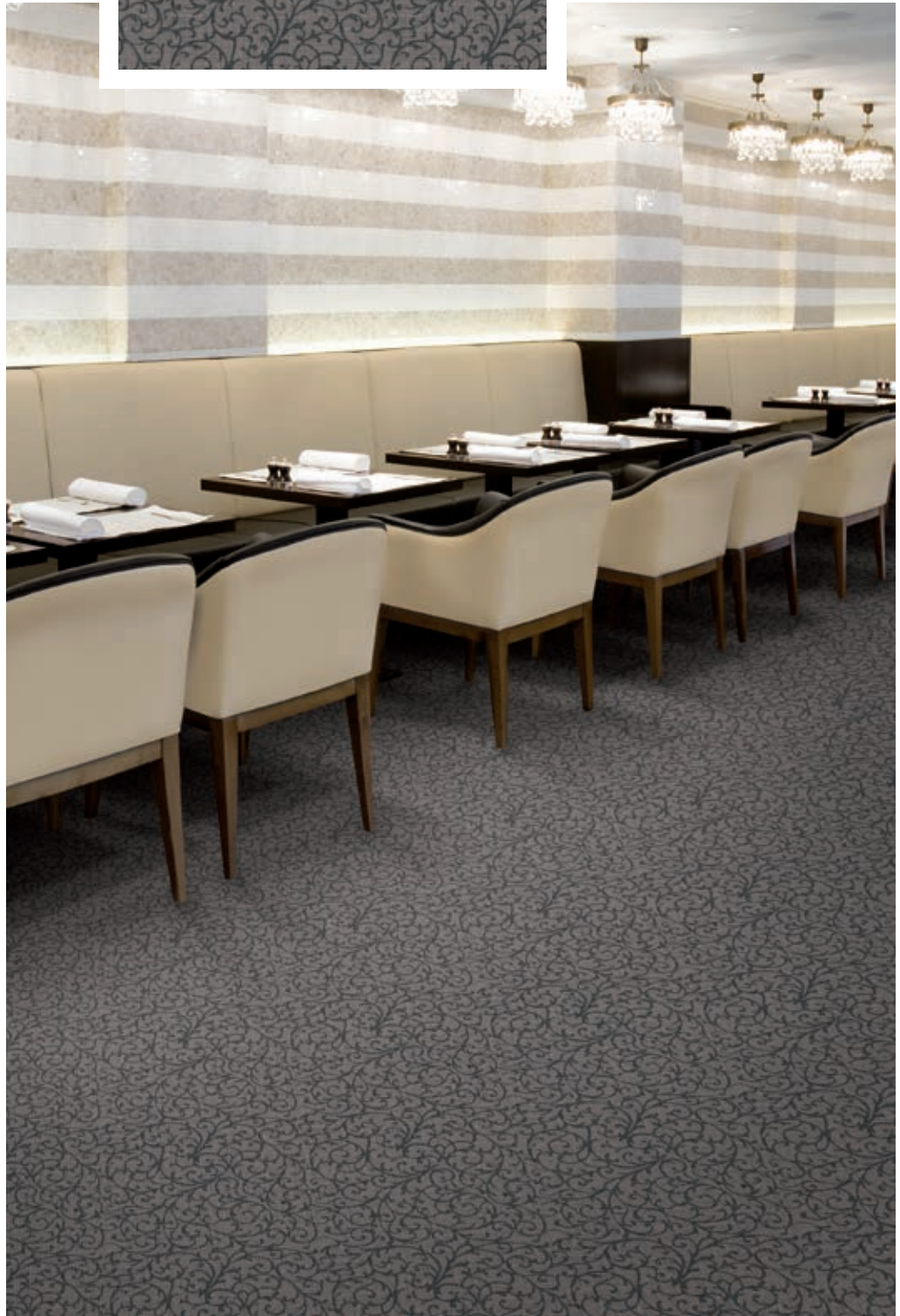
Q74-6



Q74-2

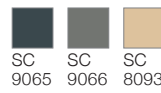


Repeat appr. 50 x 49,2 cm
Detail appr. 100 x 100 cm



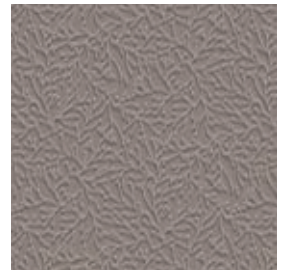


Q75-3

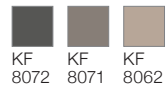


SC SC SC
9065 9066 8093

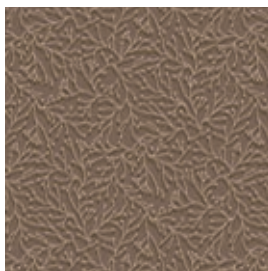
Repeat appr. 80 x 78,7 cm
Detail appr. 100 x 100 cm



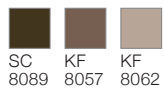
Q75-1



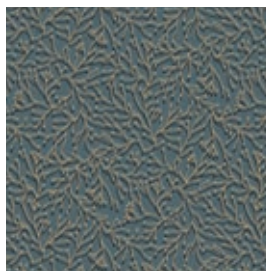
KF KF KF
8072 8071 8062



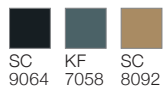
Q75-2



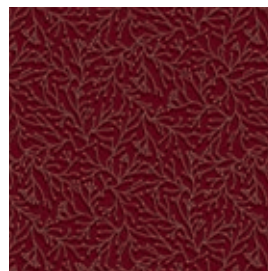
SC KF KF
8089 8057 8062



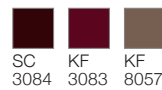
Q75-4



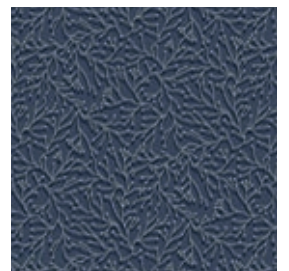
SC KF SC
9064 7058 8092



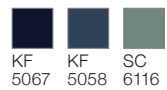
Q75-5



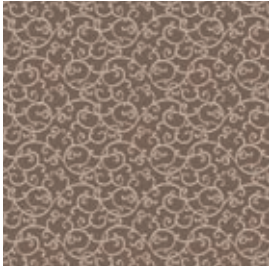
SC KF KF
3084 3083 8057



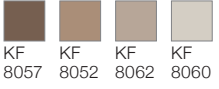
Q75-6



KF KF SC
5067 5058 6116



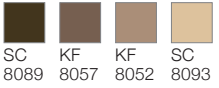
Q76-1



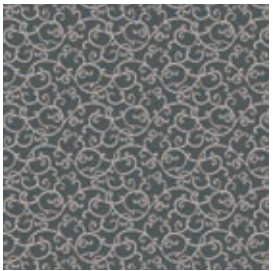
KF 8057 KF 8052 KF 8062 KF 8060



Q76-2



SC 8089 KF 8057 KF 8052 SC 8093



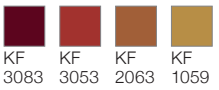
Q76-3



SC 9065 KF 8071 KF 8062 KF 8060



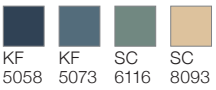
Q76-5



KF 3083 KF 3053 KF 2063 KF 1059



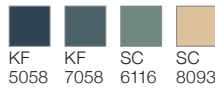
Q76-6



KF 5058 KF 5073 SC 6116 SC 8093



Q76-4

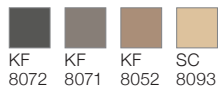


KF 5058 KF 7058 SC 6116 SC 8093

Repeat appr. 30,8 x 30 cm
Detail appr. 100 x 100 cm



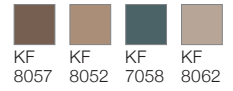
Q77-2



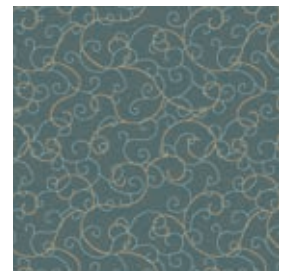
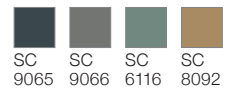
Repeat appr. 66,7 x 65,7 cm
Detail appr. 100 x 100 cm



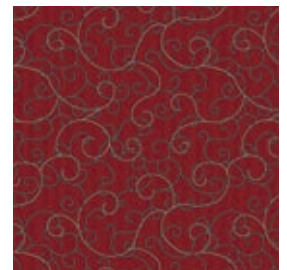
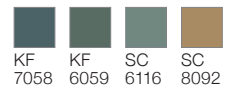
Q77-1



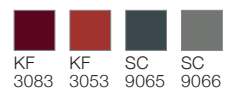
Q77-3



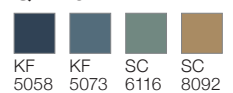
Q77-4



Q77-5

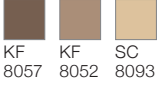


Q77-6

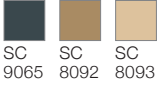




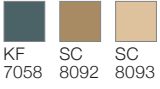
Q78-2



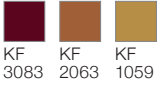
Q78-3



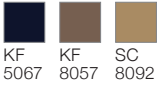
Q78-4



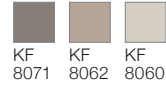
Q78-5



Q78-6



Q78-1

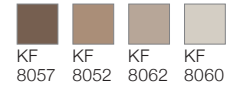


Repeat appr. 22,2 x 22 cm
Detail appr. 100 x 100 cm

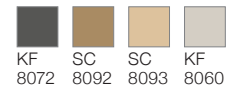




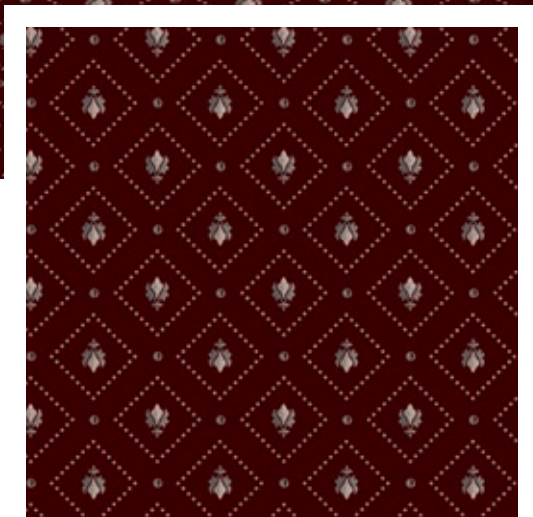
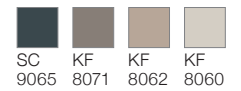
Q79-1



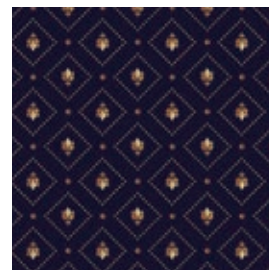
Q79-2



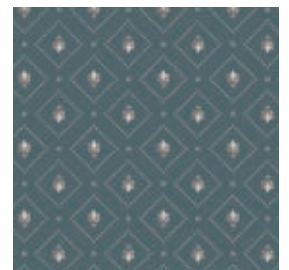
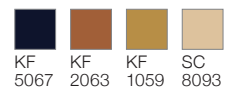
Q79-3



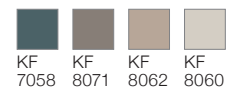
Q79-5



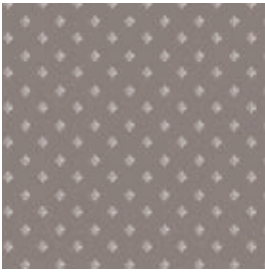
Q79-6



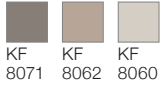
Q79-4



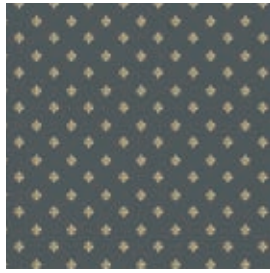
Repeat appr. 25 x 24,6 cm
Detail appr. 100 x 100 cm



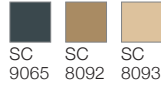
Q80-1



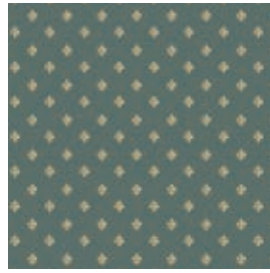
KF 8071 KF 8062 KF 8060



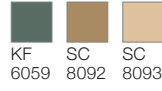
Q80-3



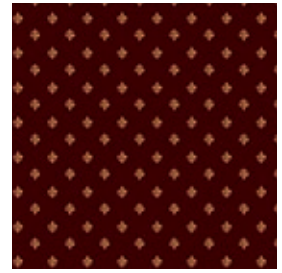
SC 9065 SC 8092 SC 8093



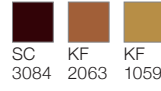
Q80-4



KF 6059 SC 8092 SC 8093



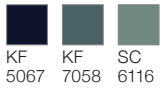
Q80-5



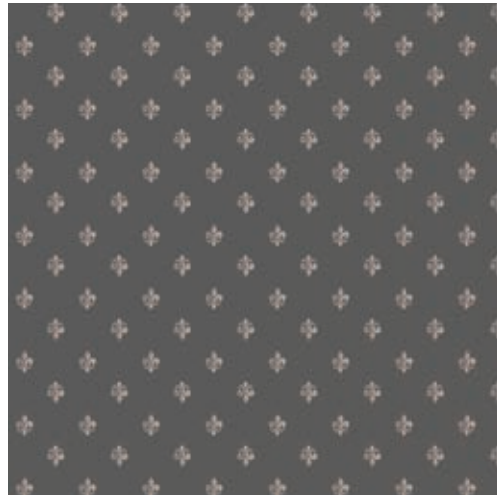
SC 3084 KF 2063 KF 1059



Q80-6



KF 5067 KF 7058 SC 6116



Q80-2



KF 8072 KF 8071 KF 8062

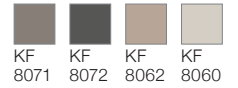
Repeat appr. 25 x 24,6 cm

Detail appr. 100 x 100 cm

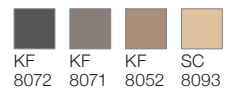




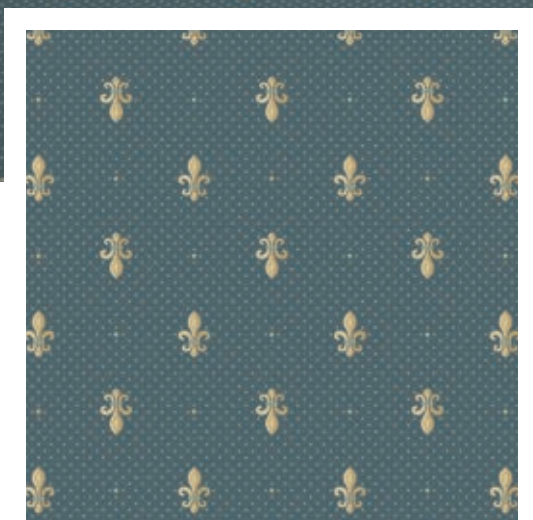
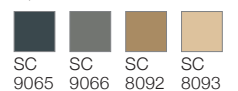
Q81-1



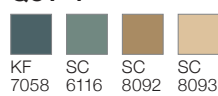
Q81-2



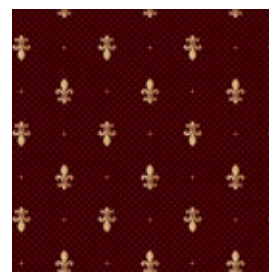
Q81-3



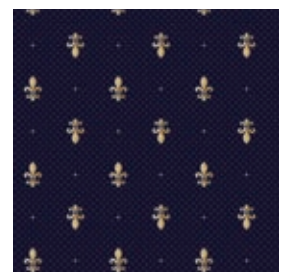
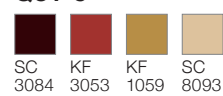
Q81-4



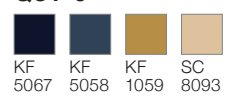
Repeat appr. 30,8 x 30,3 cm
Detail appr. 100 x 100 cm

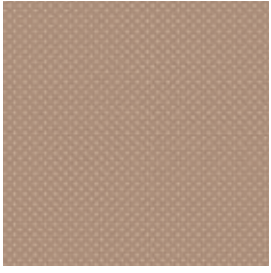


Q81-5

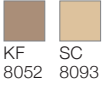


Q81-6

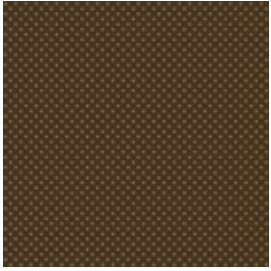




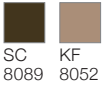
Q82-1



KF SC
8052 8093



Q82-2



SC KF
8089 8052



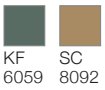
Q82-3



SC SC
9065 8092



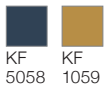
Q82-4



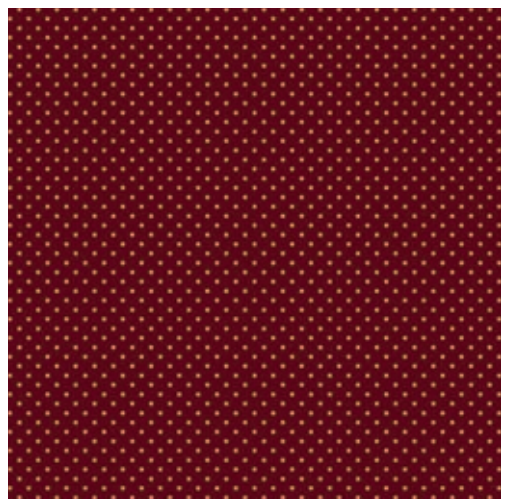
KF SC
6059 8092



Q82-6



KF KF
5058 1059



Q82-5



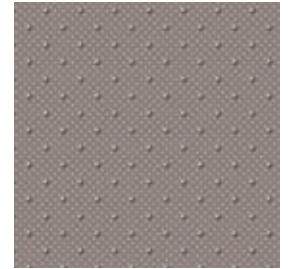
KF KF
3083 1059

Repeat appr. 2,5 x 2,4 cm
Detail appr. 66,7 x 66,7 cm

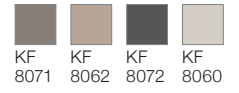
Q83-3



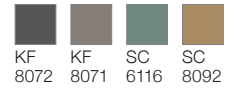
Repeat appr. 8,3 x 8,2 cm
Detail appr. 66,7 x 66,7 cm



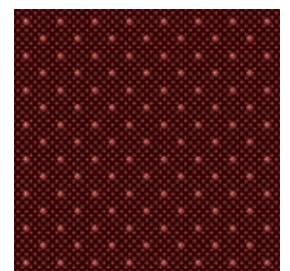
Q83-1



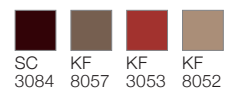
Q83-2



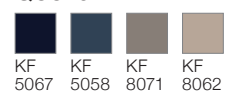
Q83-4



Q83-5

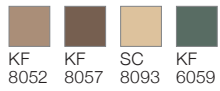


Q83-6





Q84-1



Q84-2



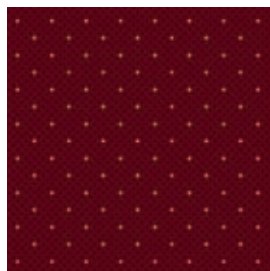
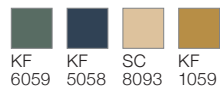
Repeat appr. 8,3 x 8,2 cm
Detail appr. 66,7 x 66,7 cm



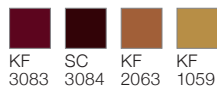
Q84-3



Q84-4



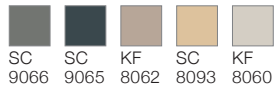
Q84-5



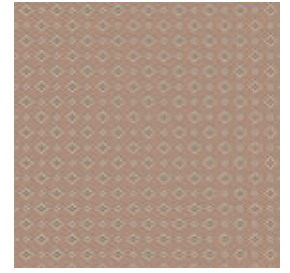
Q84-6



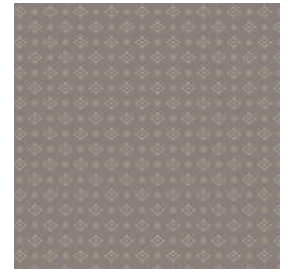
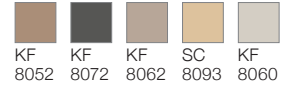
Q85-3



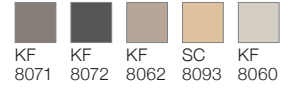
Repeat appr. 7,4 x 7,3 cm
Detail appr. 66,7 x 66,7 cm



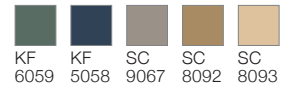
Q85-1



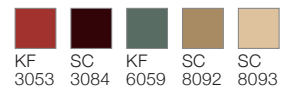
Q85-2



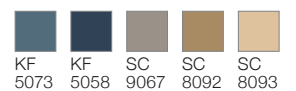
Q85-4

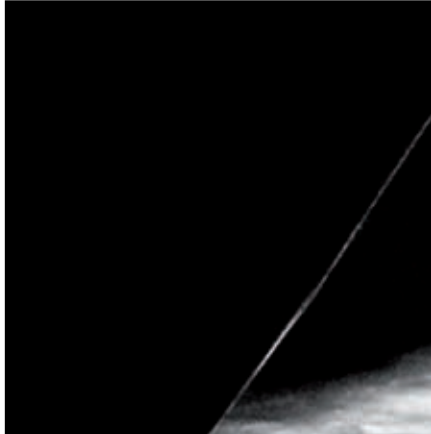
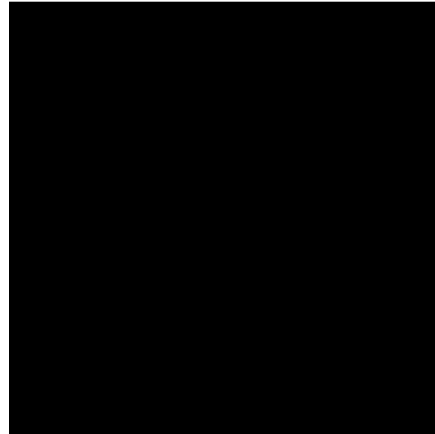
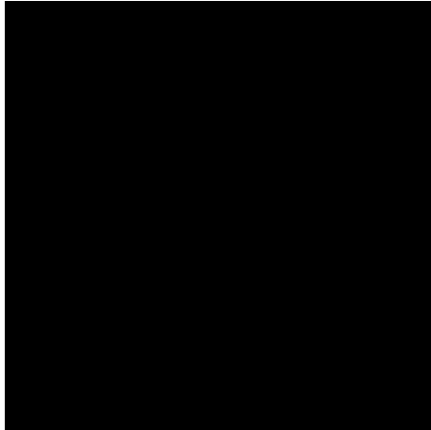
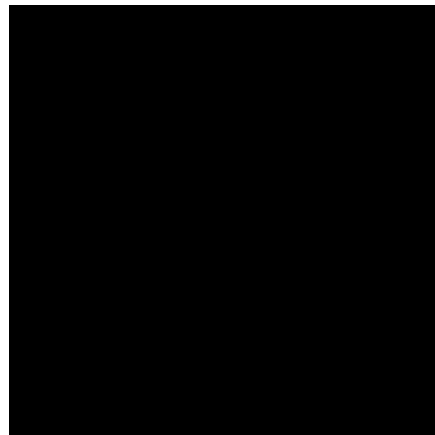


Q85-5



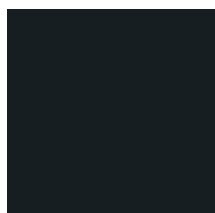
Q85-6







Farben | Colours | Couleurs



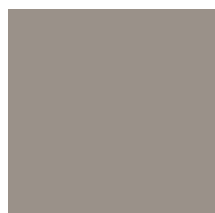
SC 9064



SC 9065



SC 9066



SC 9067



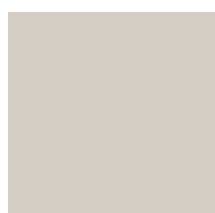
KF 8072



KF 8071



KF 8062



KF 8060



SC 8093



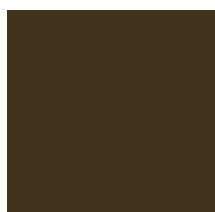
SC 8092



KF 8052



KF 8057



SC 8089



SC 3084



KF 3083



KF 3053



KF 2063



KF 1059



KF 5067



KF 5058



KF 5073



SC 6116



KF 6059



KF 7058

Bitte beachten Sie, dass die in dieser Kollektion dargestellten Farben nur annähernd den tatsächlichen Teppichbodenfarben entsprechen. Verwenden Sie bitte unsere original Farbmuster.

Please note that colours in this printed brochure are approximate. For correct colours please refer to our colour samples.

Veillez noter que les couleurs représentées dans cette collection sont approximatives par rapport aux couleurs réelles. S'il vous plaît utiliser notre nuancier original.

AP 900

Warenkonstruktion Construction Structure		Tufting Velour Saxony 1/10“ tufted cut pile Saxony 1/10“ Tufting Velours Saxony 1/10“
Mustergestaltung Design Dessin		Chromojet Druck Chromojet printed Impression jet d'encre
Polmaterial nach TKG Pile layer Nature de la fibre selon la TKG		100% Polyamid 6 100% Polyamide 6 100% Polyamide 6
Tufting-Träger Primary backing Sous-couche tuftage		75% PES / 25% PA-Vlies 75% PES / 25% PA-non woven 75 % polyester / 25 % non-tissé PA
Rückenausrüstung Secondary backing Dossier d'envers		textiler Zweitrücken woven PP PP tissé
Lieferform Available size Format de livraison	Bahnenware rolls rouleaux	400 cm
Verwendungsbereich Wear rating Domaine d'application	EN 1307	gewerblich - stark (33) commercial - heavy (33) commercial - élevé (33)
Komfortwert Comfort rating Valeur de confort	EN 1307	LC 2
Flächengewicht Total weight Grammage total	ISO 8543	ca. 1930 g/m ² app. 1930 g/m ²
Gesamtdicke Total thickness Épaisseur totale	ISO 1765	ca. 7 mm app. 7 mm
Poleinsatzgewicht Pile total yarn weight Poids du velours		ca. 980 g/m ² app. 980 g/m ²
Polschichtdicke Pile height above primary backing Épaisseur du velours	ISO 1766	ca. 4,2 mm app. 4,2 mm
Pol-Rohdichte Pile density Densité brute du velours	ISO 8543	ca. 0,14 g/cm ³ app. 0,14 g/cm ³
Noppenzahl Number of tufts Nombre de tufts	ISO 1763	ca. 173800 /m ² app. 173800 /m ²
Elektostatisches Verhalten Vertical resistance Comportement électrostatique	ISO 6356	≤ 2 kV
Bewertete Trittschallminderung Impact sound reduction Indice de réduction des bruits d'impact	ISO 140-8	ca. 27 dB app. 27 dB
Schallabsorptionsgrad α_w Sound absorption rate Coéfficient d'absobtion acoustique	ISO 354	ca. 0,2 app. 0,2
Wärmedurchlaßwiderstand Thermal resistance Résistivité thermique	ISO 8302	ca. 0,13 m ² K/W app. 0,13 m ² K/W
Prodis-Lizenz-Nummer Prodis-licence-number N° de licence Prodis		FDBD24FD
Umwelt-Produktdeklaration Environmental Product Declaration Déclaration Environnementale Produit	ISO 14025	EPD-GUT-20170017-CCA1-DE-D
Allgemeine bauaufsichtliche Zulassung (abZ) abZ-number Agrément technique général		Z-156.601-617
Brandverhalten Reaction to fire Comportement au feu	EN 13501	Cfl-s1
CE-Nummer CE-number numero CE		1658-CPR-3139
DoP-Nummer DoP-number numero DoP		0001
Lichtechtheit Colour fastness to light Stabilité à la lumière	DIN EN ISO 105 B02	≥ 5
Wasserechtheit Colour fastness to water Résistance à l'eau	DIN EN ISO 105 E01	≥ 4
Reibechtheit Colour fastness to rubbing Résistance à l'usure par friction	DIN EN ISO 105 X12	≥ 3-4



Zusatzeignungen
Additional properties
Aptitude additionnelle

Stand September 2017. Kontaktieren Sie Ihren Ansprechpartner für das aktuelle Datenblatt.
Status September 2017. Please contact your representative for the current technical specifications.
État Septembre 2017. Contactez votre responsable pour la courante fiche technique.

CARPET PRODUCT GUIDE



Halbmond Teppichwerke GmbH
Carl-Wilhelm-Koch Straße 6
D-08606 Oelsnitz, Germany
Tel.: +49 37421-42-0
Fax: +49 37421-42-571
info@halbmond.de
www.halbmond.de